

The Bridge NDC & LB Haringey
2939 Seven Sisters Neighbourhood Plan
Public Consultation – Interim Report

Contents

1. Summary	2
2. Issues & Responses	4
3. Appendix: Public Consultation	9
4. Appendix: Youth Consultation	19

Urban Initiatives
20 August 2008

1. PROCESS

1.1 Scope of Consultation

It is anticipated that the Neighbourhood Plan could inform Haringey's emerging Core Strategy (currently at Issues & Options stage), and subsequently could be adopted in whole or in part as a Supplementary Planning Document, subject to the requirements of the SPD process. The consultation is therefore not subject to statutory requirements, but has been informed by best practice guidance as set out in Haringey Council's Statement of Community Involvement.

1.2 Purpose of Consultation

The purpose of the consultation was to extend the scope of public involvement in the project beyond the NDC Partnership Board and the 'Neighbourhood Team' focus group which had guided the development of the proposals. Its objectives were to:

- Inform the local community about work on the Neighbourhood Plan;
- Test the scope and aims of the plan proposals; and
- Identify the key priorities and any potential points of conflict.

1.3 Structure of Consultation

The consultation took a number of forms:

- General Public Consultation via exhibition, staffed drop-in events; and workshops at four different venues, including presentation at Tottenham Green & Seven Sisters Area Committee meeting;
- Targeted consultation at key stakeholders and harder-to-reach groups;
 - o Youth consultation, conducted by NDC youth advisors;
 - o Employer consultation (ongoing);
 - o Resident live/work community (ongoing);
 - o Charedi Community (ongoing);
- Online consultation via Haringey Council (ongoing).

This interim report presents the findings of the completed public and youth consultations.

1.4 Interim Overview

- Attendance at (and response levels to) all elements of the consultation were not high. Circa 100 written responses were received, ranking the proposals by priority and/or acceptability, and offering general comments on the proposals;
- The majority of these responses were received at events that were staffed by the consultant team, suggesting that the material in the exhibition may have been difficult to engage with due perhaps to extent, scope, level of detail, etc. of proposals;
- The sample was relatively balanced in terms of age, gender, ethnicity, and location;
- In general, though the attendance was low, there was an impressive level of engagement with the content of the proposals by those visiting the exhibition and by those responding to the proposals, many of which added considerably to an understanding of the priorities and issues;
- A summary of the consultation responses is given overleaf;
- This summary will be extended once the full consultation process is completed.

1.5 (Partial) Explanations for lack of engagement

- Number/complexity of proposals?
- Lack of immediacy of plan proposals due to length of timescale and uncertainty of delivery?
- Difference of scale between the NDC area and the plan area?
- Consultation fatigue?

1.6 Additional Consultation

Further to meeting with the LBH Director of Urban Environment on 7th August, and his request to amplify proposals for housing renewal in the plan in the context of the recent change in approach to borough housing policy, it is proposed to conduct an additional consultation on the plan by means of resident interview. It is intended that this additional consultation would address both the low response rate to the consultations to date, and the change in emphasis on housing issues generally. The interviews are planned to take place in the month of September.

1.7 Final Report

Pending completion of the ongoing additional consultations, it is proposed to issue the completed consultation report as part of the Draft Neighbourhood Plan final report to be presented to the NDC Partnership Board on 10th October.

2. SUMMARY OF ISSUES, RESPONSES, AND PROPOSED ACTIONS

Ref.	Issue	Response
A		
General Comments		
A.1	In overall terms, the response to proposals was positive and supportive both from the general public consultation and from the youth consultation. No proposals met substantial opposition, but there were differing degrees of consensus on different proposals.	Action: Retain all proposals in plan, but develop emphasis and/or refine detail in response to consultation priorities
A.2	Public consultation and youth consultation both concerned that continuing work needed to address antisocial behaviour .	The plan proposals are based on best practice principles of urban design, which contribute to safety and security in the public realm generally, and thus have an important role in addressing antisocial behaviour.
A.3	Criticism of manner of presentation of public consultation materials. Suggestion that there should be more opportunity to offer opinions on specific suggestions.	The manner of presentation of the consultation materials was intended primarily to address the fragmentation of the study area and the lack of integration with its surroundings. Detail and opportunity for response on a whole range of proposals was provided, sufficient for a wide number of positive and negative opinions to be expressed by a large number of respondents.
A.4	Observation that there were no specific proposals for the Hillside Road area (Stamford Hill)	Action: Ensure the plan addresses all parts of the plan area in a way that is direct, specific, and easy to find
A.5	A number of respondents in the youth consultation were particularly sceptical that the Neighbourhood Plan would change anything.	Action: Link each proposal in a clear way to the implementation and delivery plan.
B		
Public Open Space		
B.1	Strong support for improving the security of Brunswick Park (Proposal 4.a)	Action: Provide more detail on this proposal
B.2	Lack of consensus on the principle of removing the wall to St. Ann's Hospital , retaining existing buildings, calming the road, and extending Chestnuts Park	Action: Develop options for configurations of the St. Ann's Road frontage of Chestnuts Park / St. Ann's Hospital

B.3	Support for improving the quality of, and access to, green space along the New River	Action: Provide more detail on this proposal
B.4	Support for allotment and community gardens , and suggestion of initiative to improve private gardens	Action: Develop a new proposal for support to people in improving their private gardens, especially in terms of front gardens and food production
B.5	Young men appeared less interested in the proposals to provide a wider variety of green spaces including allotment gardens, adventure playgrounds, etc.	Action: Ensure existing and new green spaces respond to the interests of different sections of the community whether defined by age, gender, ethnicity, or disability.
C Transport		
C.1	Strong support in the public consultation for new pedestrian and cycle routes	Action: Provide more detail on this proposal
C.2	Support for improvements to Hermitage Road, including opening up current 'dead-end' to local and/or resident only through-traffic	Action: Re-examine case for improving movement and the public realm along Hermitage Road
C.3	Strong support for limiting the circulation of freight traffic, with some reservations as to deliverability	Action: Provide more detail on this proposal
C.4	Strong concern among young people with the proposal for footbridge connections between Seven Sisters to Woodberry Down, based possibly on lack of knowledge of New River	Action: Develop a new proposal for social initiatives to bridge between Seven Sisters and Woodberry Down. Action Set out the physical and social conditions that must be in place before any bridge connections are established.
C.5	Observation that proposal for signposting may be of particular help to people new to the area, including people for whom English is a second language. (5.b)	Action: Any wayfinding system should include graphic elements that can assist non-native English speakers.

D Employment		
D.1	The priority for young people was to improve young people's access to work and career opportunities through local networking, mentoring, placements, internships, and scholarships (5.f)	Action: Provide more detail on this proposal
F St. Ann's Hospital		
F.1	Some respondents raised fears of mental health services at St. Ann's	No secure accommodation is currently provided on the St. Ann's site.
F.2	Some respondents voiced concern at the scale of potential redevelopment plans for St. Ann's	The scale and mix of uses of any redevelopment of the St. Ann's site is beyond the scope of this plan. The plan will however set out the principles which any redevelopment plan should follow.
G Housing		
G.1	The proposal to permit residential development throughout the area was met with some concern by a number of respondents in the public consultation, particularly with respect to the impact on transport, local services, and parking.	The proposal is broadly in line with central and local government policy. Action: Provide more detail on this proposal, including reviewing the potential capacity issues in transport, local services, and parking
G.2	There was strong support in the youth consultation for improving access to affordable housing	Action: Ensure proposals for increased housing choice address, in particular, young people's access to housing

Appendices

3. APPENDIX: PUBLIC CONSULTATION

3.1 Consultation Materials

The content, language, and outreach of the public consultation was developed in conjunction with the NDC, a dedicated subcommittee of the NDC Partnership Board, and Haringey Council.

3.2 Media

Information on the public consultation was disseminated by the following means:

- Banners placed by the NDC at the Laurels Healthy Living Centre and at Stamford Hill School;
- Mail-out by the NDC of invitation pamphlets to all households in the area;
- Posters distributed by the NDC to community facilities, shops, etc. throughout the area; and
- Online information at <http://www.thebridgendc.org.uk/>

3.3 Location, Duration, & Attendance

Consultation events took place in four venues over a two-week period, timed for completion before the onset of school holidays so as to facilitate the involvement of the greatest number of people possible.

Events comprised:

- An exhibition of six A-0 panels giving information on the plan proposals; and
- Drop-in sessions where the client and consultant team were available to discuss the proposals set out in the exhibition, including attendance at the Tottenham Green & Seven Sisters Area Committee meeting.

The duration of the events, as well as the attendance levels, were as follows:

	DURATION		ATTENDANCE	
	Exhibition	Drop-in	Sign-in sheet	Response Form
Marcus Garvey Library	7 th -11 th July	9 th July	8	8
Stamford Hill School	12 th July	12 th July	-	6
The Laurels Healthy Living Centre	14 th -18 th July	15 th July	15	6
St. Ann's Police Station (Open Day)	19 th July	19 th July	26	26
Total Respondents			49	46

3.4 Demographic Balance

The sample was relatively balanced in terms of age, gender, ethnicity. Most respondents are resident in the area. Details are set out in the table below:

Age Range		Gender		Ethnicity		Locality	
10-19	1	male	21	White	3	Live	16
20-29	0	female	20	White	12	Live/ facilities	7
30-39	5			British/UK		Live/work	1
40-49	7			White	2		
50-59	8			Irish		Live/work/ facilities	9
60+	7			British	7	Work	1
				Black	0	Facilities	6
				Black Caribbean	6		
				Black African	2		
				Black Asian	2		
				British Asian	1		
				Asian	1		
				Caribbean			
Total	28	Total	41	Total	36	Total	40
No reply	18	No reply	5	No reply	10	No reply	6

3.5 General Overview

The responses were very rich in terms of comments and feedback in general. A number of issues were identified as having been overlooked or underemphasised by the proposals:

- Growing vegetables locally;
- Support for upkeep of private gardens, perhaps through "Making the Difference" programme;
- Poor upkeep of Network Rail lands.

Numerous comments raised the issue of safety throughout the area, as well as the fate of Chestnuts Community Centre and access to community facilities in general.

Most Important

The MOST approval across all the responses was for:

(3.d) Improve pedestrian safety

This result is striking because it is accompanied by a range of other transport measures which were given high priority, including:

(3.a) Create new pedestrian and cycle routes through the area (4.43)

(3.e) Improve access to rail and underground services (4.41)

(3.f) Limit heavy freight traffic to within employment areas (4.28)

(3.c) Introduce traffic-calming measures (4.23)

Least Important

The LEAST approval across all the responses was for:

(6.e) Permit residential uses in all areas (3.69)

This result is particularly striking when considered together with proposal (5c) Increase housing choice, and improve local people's access to housing, particularly by expanding affordable housing (4), which also ranked very low in priority. This is in stark contrast to the results of the youth consultation (see below), which identified it as a key priority.

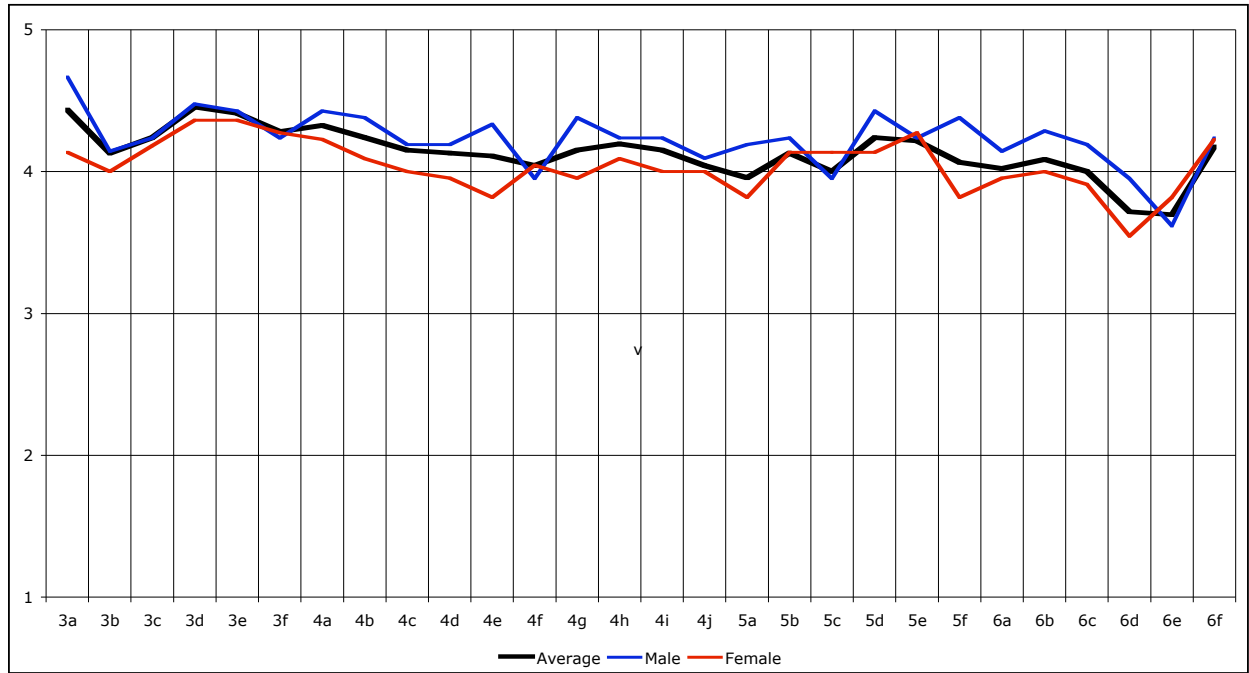


Fig. A. Public consultation respondents, sorted by gender.

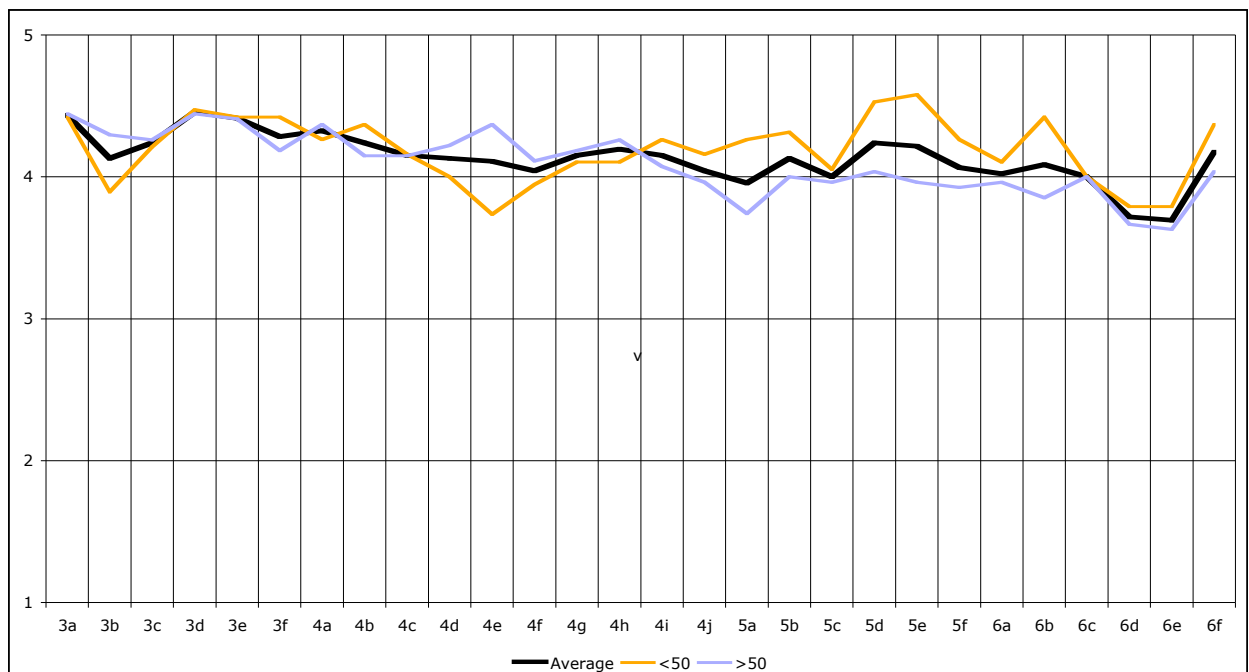


Fig. B. Public consultation respondents, sorted by age.

3.6 Priorities

Below are the Neighbourhood Plan proposals are sorted by importance in general public consultation. Average scores (out of 5) are given in brackets.

1st.	3d	Improve pedestrian safety (4.45)
2nd.	3a	Create new pedestrian and cycle routes through the area (4.43)
3rd.	3e	Improve access to rail and underground services (4.41)
4th.	4a	Improve the security of existing green spaces (4.32)
5th.	3f	Limit heavy freight traffic to within employment areas (4.28)
6th.	3c	Introduce traffic-calming measures (4.23)
7th.	4b	Create a wider variety of local green spaces (4.23)
8th.	5d	Make a place in each neighbourhood where young people can go (4.23)
9th.	5e	Create child-friendly streets (4.21)
10th.	4h	Provide new sustainable urban drainage systems(4.19)
11th.	6f	Grow an entrepreneurial local culture(4.17)
12th.	4c	Connect green spaces to improve wildlife habitat (4.15)
13th.	4g	Reconnect Seven Sisters to the New River and Stonebridge Brook (4.15)
14th.	4i	Generate energy locally (4.15)
15th.	3b	Connect The Bridge area to Woodberry Down and Manor House (4.13)
16th.	4d	Protect the settings of listed and distinctive buildings (4.13)
17th.	5b	Improve signposting throughout the area (4.13)
18th.	4e	Extend Chestnuts Park(4.10)
19th.	6b	Find what is special in each area (4.08)
20th.	5f	Create links between different community uses (4.06)
21st.	4f	Strengthen Seven Sisters "Urban Avenues" (4.04)
22nd.	4j	Share useful resources (4.04)
23rd.	6a	Make clear and attractive entrance points (4.02)
24th.	5c	Create ways for local people to access housing & for new people to move into area (4)
25th.	6c	Concentrate activities according to their transport needs (4)
26th.	5a	Make a positive impression at key arrival points and gateways (3.95)
27th.	6d	Encourage similar uses to locate together(3.71)
28th.	6e	Permit residential uses in all areas (3.69)

3.7 Issues & Responses

A. General Comments

In general, comments on the proposals were positive, with a number of respondents taking the opportunity to welcome the proposals specifically. This support was in some cases tempered with the observation that continuing work is needed on neighbourhood 'fundamentals' – such as crime, anti-social behaviour, dumping. One respondent was strongly critical of the way in which the consultation was presented, and another identified a specific part of the study area which appeared not to be directly addressed.

A.1 Positive support

- *“These new initiatives to boost the area are vitally important to bring the Seven Sisters area up to par with surrounding areas”*
- *“I quite like projects on all four panels because over the years this area has been neglected and in need of some money spent on it. Our youngsters need places where they can play safely, and our older people need to get about the area without fear. To make a good community all ages need to work together [with] the Police and other vital services to make a safe neighbourhood.”*

A.2 Antisocial behaviour

- *“Crime and unacceptable unsocial behaviour are the most important things that need to be tackled. The rest would be window dressing unless these issues are addressed / solved.”*

A.3 Presentation

- *“Too many of the proposals are virtually impossible to disagree with – this makes them meaningless... There should be more opportunity to offer opinions on specific suggestions rather than good intentions.”*

A.4 Study Area

- *“As a resident of Hillside Road – supposedly in the area – we seem to have been completely forgotten! I see nothing in our corner of the area. Even Stamford Hill Station is not seen as important!”*

B. Public open space

Many respondents made specific comments on public open space, with a number of people describing its importance to the life of residents and the community in general. The proposal to secure Brunswick Park was supported by a number of respondents, whereas there was a wide range of opinion expressed on the proposals relating to Chestnuts Park and St. Ann's Hospital, including the removal of the Hospital wall, the traffic-calming of St. Ann's Road, and the extension of the park into the St. Ann's site. There was also support for access to and improvement of currently inaccessible or under-used green spaces such as along the rail sides and at the New River, together with the possibility of activities along the river. Other respondents questioned the emphasis on public open space, when the area would also greatly benefit from improvements to private front gardens. A number of respondents also supported the incorporation of food production in public open space, community and allotment gardens, and private gardens.

B.1 Brunswick Park:

- *“There is a chance to really make a nice park for the community – there used to be an access point [to Seven Sisters Station]”*
- *“Crime and safety issues have to be addressed [at Brunswick Park] - CCTV?”*
- Proposal 4.a “Improve the security of existing green spaces” related directly to Brunswick Park, and had an average score of 4.32/5.00 (4th of 28)

B.2 Extending Chestnuts Park into St. Ann's Hospital:

- *"Neighbourhoods groups opinion [re] improvements in Chestnuts Park?"*
- *"St. Ann's wall should be removed"*
- *"I am not convinced that the couple of buildings along the frontage are of such quality that they should be kept. Removal of the majority of the wall seems to me a good idea (breaks impenetrable real and psychological barrier), but I think that a railing should be there. In making that comment I am assuming that the idea of a green frontage would be pursued."*
- *"St Ann's Hospital wall should be left standing and new buildings on the site should be set back so the park can breathe. Traffic calming is good idea as the park is opposite."*
- *"I like the idea of linking Chestnuts Park and St. Ann's"*
- *"Why gateposts one part of park then no boundaries in others? False impression St. Ann's is not a pedestrian street."*
- *"I don't think extending Chestnuts' Park across the busy St. Ann's Road will work"*
- *"On the issue of traffic calming St Ann's Road consideration should be given to the likely displacement to adjoining roads."*
- Proposal 3.c "Introduce traffic-calming measures" had an average score of 4.23/5.00 (6th of 28)
- Proposal 4.d "Protect the setting of listed and distinctive buildings" had an average score of 4.13/5.00 (16th of 28)
- Proposal 4.e "Extend Chestnuts Park" had an average score of 4.10/5.00 (18th of 28)

B.3 New River:

- *"It's very lonely there [the New River], you only see big lorries and factories"*
- *"Walking tours of the New River?"*
- *"Green spaces beside the New River and behind Ermine Road should be improved and made more useful to local residents."*
- Proposal 4.b "Create a wider variety of local green spaces", including at the New River, had an average score of 4.23/5.00 (7th of 28)
- Proposal 4.g "Reconnect Seven Sisters to the New River" had an average score of 4.15/5.00 (13th of 28)

B.4 Gardens and Food Production:

- *"Why spend so much money on parks when people need help with their gardens, with the heavy work?"*
- *"People need more support in keeping up the maintenance of their front gardens"*
- *"A lot of unused gardens could be used to grow vegetables"*
- *"Local food production – for the community (of ALL ages) to be involved in the process. This will improve health also gives the youth something beneficial to do and reconnect population with planet"*
- Proposal 4.b "Create a wider variety of local green spaces", including allotment and community gardens, had an average score of 4.23/5.00 (7th of 28)

C. Transport

There was wide support for the creation of new pedestrian and cycle routes, notwithstanding concern at the potential for antisocial behaviour, as well as a suggestion for broader consideration of cycling issues including provision for bicycle storage. One respondent was concerned that new signposting could contribute to street clutter, and another identified the need to identify strategic routes to assets in the wider area. A number of issues were raised with respect to Hermitage Road, including reopening vehicular through-access in a controlled way, as well as the condition of the public realm and front gardens generally along the street. While there was support for control on the circulation of freight traffic through residential areas, these proposals would need to be developed in more detail together with residents, employers, Transport for London, and Haringey Council. Parking issues were raised by a number of respondents, particularly in the context of new residential development.

C.1 New pedestrian and cycle routes:

- *"I strongly support the green measures and creation of new cycle routes."*
- *"Connecting people in safe, environmentally friendly ways"*

- *"I find it disappointing that no reference is made to adjacent amenities such as West Green Learning Centre for example... near to the NDC that residents travel to or would travel to if say pedestrian routes were improved. Some wider strategic planning please."*
- *"Extremely concerned about crime on these [new pedestrian and cycle] routes and that cycle lanes would become high speed lanes for moped and motorbikes. Both have to be addressed and designed out."*
- *"More detail required on cycling issues, for example parking for bikes, storage facilities, sheds that can be used for bikes but not prostitution!"*
- Proposal 3.a "Create new pedestrian and cycle routes through the area" had an average score of 4.43/5.00 (2nd of 28)

C.2 Signposting:

- *"Signposting can mean street clutter"*
- Proposal 5.b "Improving signposting throughout the area" had an average score of 4.13/5.00 (17th of 28)

C.3 Hermitage Road:

- *"It would be good if you could open up Hermitage [Road]"*
- *"Please can the re-opening of Hermitage Road where it meets Ashfield Road be given consideration - with a size restriction to stop large vehicles getting through or resident-only access point as adopted in nearby area."*
- *"Hermitage Road is a long road. I prefer to walk to Seven Sisters Road and get the bus to Manor House and change for Green Lanes to get to Sainsbury's"*

C.4 Freight Traffic:

- *"Freight traffic a real problem in Ashfield Road / Oakdale Road area - there should be a limit to both size and access times for such large unnecessary vehicles."*
- *"NDC do not control the main roads- rail - powerless to date to make any improvements... traffic calming on red route? Increase pollution and defeats object."*
- *"The heavy traffic on Netherton Road could be problematic. This is very close to residential areas and new or possible developments. There may be less need for heavy traffic routes if current low-grade employment areas become more residential."*
- Proposal 3.f "Limit heavy freight traffic to within employment areas" had an average score of 4.28/5.00 (5th of 28)

C.5 Parking:

- *"[Provide] parking opportunities at Wickes on Seven Sisters Road rather than building flats. [Re: Permitting residential uses in all areas], is not residential-friendly as not everybody living in the area can afford to buy permits each time they receive visitors, and visitors' permit has also limited time too."*

D. Employment

There was little direct comment on employment issues. Respondents did identify the value of the existing employers and businesses to the area and the importance of retaining and developing employment uses in the area.

- *'Creating entrepreneurial culture locally to protect against the loss of bigger employers. It can be much more expensive to set up and be sustainable in an area like this - this is why firms tend to move out to cheaper areas. Local firms need to serve local people.'*

E. Community Facilities

Similarly there was little direct comment on community facilities. Respondents did identify the importance of the development of youth facilities in the area, the need to improve access to community facilities for community groups, and to establish the successful governance of community buildings.

- *"Use of St Ann's buildings – desperate need for projects run by youth"*
- *"I think it is important for a building to be available for voluntary and community organizations to use for their activities. This should be cheap/easy to access for groups with limited funds. Ideally office space should be available so VCS groups can be housed in the same building and share ideas/work together. There is also need for space for people that have secured money for short projects 3-6 months and to run course/classes etc. Also important for the space to be independent of the public sector agencies and run/owned/controlled by the community itself. I believe that the Chestnuts Community Centre could be developed to fulfil this function – it offers office space to community groups and has the potential to have more community use. Ideally Chestnuts will be developed to be focused on sustainability issues & to offer facilities for young people."*

F. Development at St. Ann's Hospital

A number of respondents raised concerns about potential redevelopment at St. Ann's Hospital, despite the fact that the proposals covered only general principles and did not discuss issues of scale or intensity of development. Some respondents raised concerns regarding the mental health uses on the site, while others wanted to see the retention and intensification of health uses on the site. There was also clear concern at the proposition of residential redevelopment on the site and its impact on traffic, community, and other facilities.

F.1 Fear

- *"There are/might be an issue with people that are a danger to the public."*
- *"Breaking down the barriers between the St Ann's site and the rest of the area is good in principle, but the extent to which that can be done will obviously be dependant on how mental health facilities are reprovided."*

F.2 Concern at potential redevelopment of St. Ann's Hospital site

- *"Rebuild St Ann's Hospital, so it is a proper hospital, with A&E."*
- *"Concerned about development of St. Ann's Hospital site – the size of housing, and facilities for children e.g. schools, doctors, etc."*
- *"Very concerned about St Ann's Hospital development: far too big, new schools and other services would be needed to service this development."*

G. Residential development

G.1 Permitting residential development

A range of opinions was expressed on the extension of mixed-use development throughout the area – both positive and negative – and the potential to intensify (rather than dilute) employment uses in some locations. This was the least popular proposal in the survey.

- *"Permitting residential use in all areas would dramatically change the area and seems to be a major policy change. The Vale Road / Florentia / Crusader / Arena sites would clearly be a lot more valuable if residential development would be allowed. Because of its location on a major road so close to a busy station Gourley Place would be more suitable for a major commercial development – perhaps a "landmark" office block."*
- *"Local people [should] have access to local housing and the youths have more facilities to interact with each other. That would help in some way to bond people more and create a better environment."*
- *"Mixed use is better than segregating uses."*
- Proposal 6.e "Permit residential uses in all areas" had an average score of 3.69/5.00 (28th of 28)

4. APPENDIX: YOUTH CONSULTATION

4.1 Methodology

The youth consultation was conducted through peer-to-peer interviews by a group of six of the NDC's youth advisors: Al, Daniel, Marie, Pearl, Toby, and Yasmin. The group was co-ordinated by NDC youth worker Yemi Akinfenwa. The consultant team met with the group twice in advance of the consultation, in order firstly to introduce the project in general, and secondly to develop the methodology and materials for the consultation, both of which for purposes of comparison would be based on those developed for the general public consultation. The list of questions was reduced (omitting most of those issues related to Theme 4 Open Neighbourhoods, Open Workplaces), and a pamphlet based principally on annotated graphic material was produced specifically to describe the project to young people.

4.2 Location and Sample

In the week beginning 21st July, a total of 52 respondents were interviewed at the following venues

- Triangle Centre & Paignton Park – 5 respondents
- Stonebridge Estate & Seven Sisters Station – 8 respondents
- Chestnuts Community Centre (Y2Y group) – 9 respondents
- Plevna Crescent – 8 respondents
- Edgecot Grove – 13 respondents
- Rehema Worship Church – 3 respondents
- Tiverton Estate (Fladbury Road) – 6 respondents

The youth advisors reached a relatively evenly balanced cohort in terms of geographical spread, gender, and age-range.

4.3 Level and Quality of Engagement

The consultations took a number of forms including one-to-one interviews and focus groups of up to six respondents. The youth advisors emphasised that the pamphlet produced for the consultation was particularly helpful. However, while the consultation did produce useful feedback for quantitative analysis, it produced very little additional qualitative feedback in the form of general comments or ideas. This may be due in part to a combination of factors: an inadvertent lack of emphasis given by the consultant team; the limited time available to the youth advisor group conducting the consultation; and the omission of the youth advisor group to make contact with the consultant team during the consultation period as requested. In order to address this deficit, the consultant team made follow-up contact with the youth advisors to discuss the principal findings of the consultation and examine the issues and motivations that may lie behind the responses. This follow-on produced very helpful insights not only into the issues raised, but also into general perceptions and aspirations in the area.

4.4 General Overview

Most Important

The MOST important proposal across all the responses was:

(5.f) Improve young people's access to work and career opportunities through local networking, mentoring, placements, internships, and scholarships

The youth advisors explanations and understandings of this included:

- *Improving young people's knowledge of the opportunities available, especially for those who "prefer to go to do an apprenticeship or internship but have no clear knowledge of these being available";*
- *Establishing a local focus for training and career opportunities, for example "training schemes can be reinforced to provide experience for young people in the world of work"; and*
- *Providing positive alternatives to "poor performing schools... little/no extra-curricular programmes... minor criminal activity".*

Least Important

The LEAST important proposal across all the responses was:

(3.b) Connect Seven Sisters to Woodberry Down by building three new pedestrian bridges across the New River

The youth advisors explanations and understandings of this included:

- *Lack of knowledge of the existence of the New River – "I simply don't think young people visit that particular area enough to care, there is no area for sports or socialising"; and*
- *Concern about opening links between the 'territories' of different groups – "if there was to be beef between young people from Seven Sisters and Woodberry Down and would be easier to get to each others turfs".*

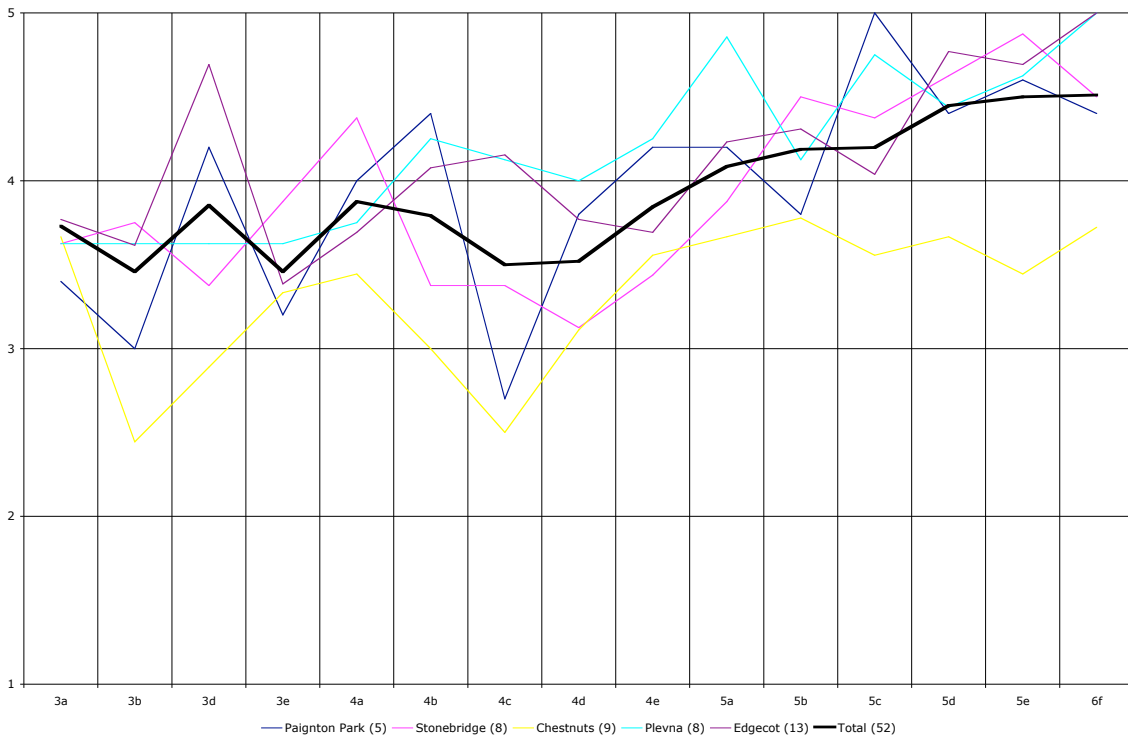


Fig. A. Youth consultation respondents, sorted by area.

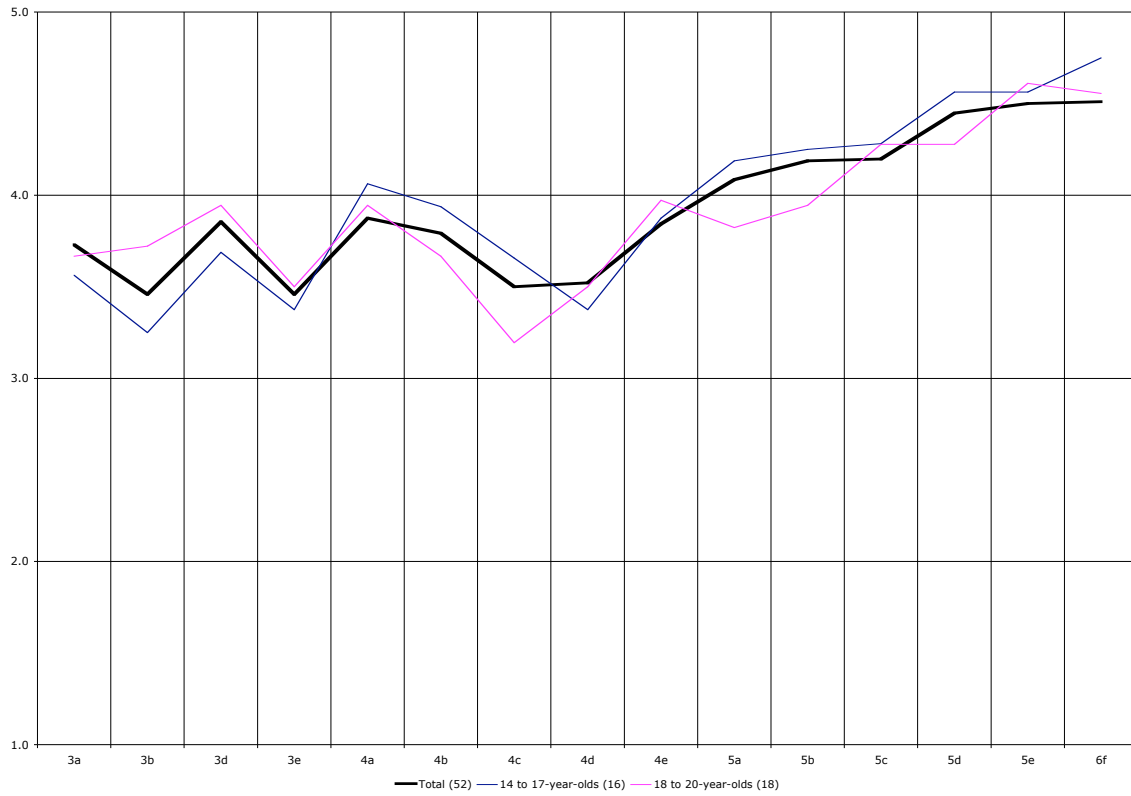


Fig. B. Youth consultation respondents, sorted by age.

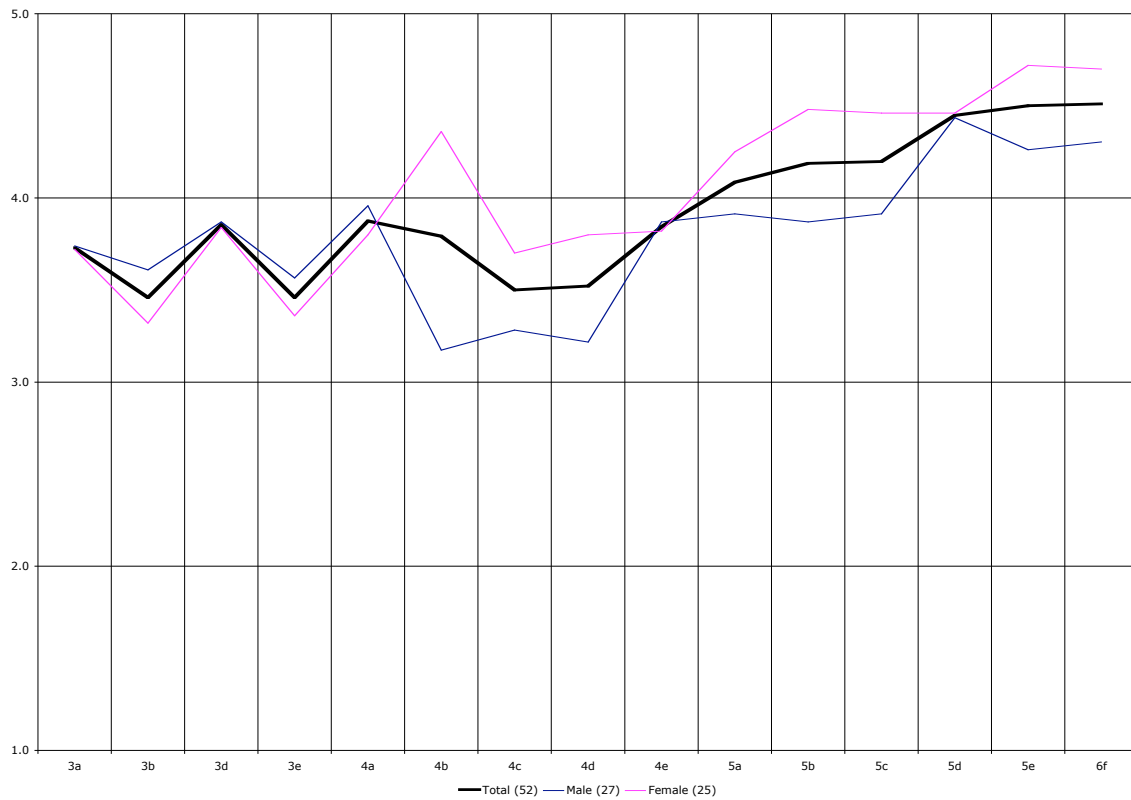


Fig. C. Youth consultation respondents, sorted by gender.

4.5 Priorities

Below are the Neighbourhood Plan proposals are sorted by importance in the youth consultation. Average scores (out of 5) are given in brackets.

- | | | |
|-------|----|--|
| 1st. | 6f | Improve young people's access to work and career opportunities through local networking, mentoring, placements, internships, and scholarships (4.51) |
| 2nd. | 5e | Make streets safer for ordinary play and socialising by young people (4.50) |
| 3rd. | 5d | In each neighbourhood provide space for young people to socialise, in part of an existing community facility, e.g. games room / skate park in local community centre / school (4.45) |
| 4th. | 5c | Increase housing choice, and improve local people's access to housing, particularly by expanding affordable housing (4.20) |
| 5th. | 5b | Improve signposting everywhere to help people find local facilities including parks, and health services (4.19) |
| 6th. | 5a | Make a positive impression at the entrances to the area, particularly along Seven Sisters Road, at Wards Corner, and the corner of Amhurst Park (4.09) |
| 7th. | 4a | Improve security in Brunswick Park and make it more useable by fencing off parts for community gardens, allotment gardens, and playground (3.88) |
| 8th. | 3d | Slow traffic down at Chestnuts Park to allow it to connect with St. Ann's Hospital (3.85) |
| 9th. | 4e | Generate electricity locally from renewable sources, for example, wind turbines, solare panels, biodigesters, possibly managed by a community trust (3.84) |
| 10th. | 4b | Make different types of green spaces which can also provide for wildlife, including allotment gardens, wildlife trails, adventure playground, etc. (3.79) |
| 11th. | 3a | Make new walking and cycling routes through Seven Sisters, including through St. Ann's Hospital (3.73) |
| 12th. | 4d | Where possible, plant with new trees any gaps in the continuous row of trees along both sides of Seven Sisters Road from Wards Corner to Amhurst Park (3.52) |
| 13th. | 4c | Extend Chestnuts Park into St. Ann's Hospital so that its historical buildings and mature trees can be part of the park (3.50) |
| 14th. | 3e | Reopen the entrance to Seven Sisters Station from Brunswick Park (3.46) |
| 15th. | 3b | Connect Seven Sisters to Woodberry Down by building three new pedestrian bridges across the New River (3.46) |

4.6 Issues & Responses

A. General Comments

Notwithstanding the lack of “depth” of the original survey, the general feedback on the proposals was positive. There was however a degree of uncertainty that the proposals could be implemented in a lasting way, with numerous respondents making comments only in relation to crime.

A.1 Positive support

- *“It’s really really good”*
- *“This is sick, man”*
- *“It’s really encouraging to see this take place in Tottenham”*
- *“I feel like the community lacks social spaces. It needs more parks and more places where people can play in safety.”*

A.2 Antisocial behaviour

- *“[Concern at] maintenance of running the adventure playgrounds”*
- *“I don’t think it’ll work. People will just wreck it”*
- *“Reduce crime”*
- *“Concerned about crime and safety”*

A.5 Skepticism as to successful implementation

- *“[Concern at] maintenance of running the adventure playgrounds”*
- *“I don’t think it’ll work. People will just wreck it”*

B. Public Open Space

B.5 Young men’s attitude to / interest in public open space

In public open space issues there was markedly more interest from female respondents than from male. The youth advisors’ explanations and understandings of this included:

- The role of these spaces in building social capital, for example *“concerning the allotment gardens, I believe women see community bonding as quite instrumental in helping the community grow positively as it creates more trust ... This in turn makes the community a safer place for everyone”*;
- Gendered understandings of the use of public space, for example *“perhaps females, unlike males, see that a ‘green space’ is not just useful as a sports pitch and are able to use it in a number of ways, some of which are socially unacceptable if done by males (picnics, gardening etc)”* and *“Most of the females were very keen on the idea of preserving the wildlife because they wanted to become aware of the wildlife in the green spaces”*.

C. Transport

C.4 Connections to Woodberry Down

The lowest priority emerging from the youth consultation was the proposal to connect Seven Sisters to Woodberry Down by building three new pedestrian bridges across the New River. The youth advisors’ explanations and understandings of this included:

- *Lack of knowledge of the existence of the New River – “I simply don’t think young people visit that particular area enough to care, there is no area for sports or socialising”*; and
- *Concern about opening links between the ‘territories’ of different groups – “if there was to be beef between young people from Seven Sisters and Woodberry Down and would be easier to get to each others turfs”*.

C.5 Signposting

Youth consultation supported improving signposting everywhere to help people find local facilities including parks, and health services as “these changes will help everyone”, but offered an interesting insight in that signposting “is particularly helpful to new immigrants, who tend to rely on word-of-mouth from within their community to access public services”.

D. Employment

D.1 Career paths for young people

Employment issues featured as the most popular proposal in the youth consultation. The youth advisors' explanations and understandings of this included:

- *Improving young people's knowledge of the opportunities available, especially for those who "prefer to go to do an apprenticeship or internship but have no clear knowledge of these being available";*
- *Establishing a local focus for training and career opportunities, for example "training schemes can be reinforced to provide experience for young people in the world of work"; and*
- *Providing positive alternatives to "poor performing schools... little/no extra-curricular programmes... minor criminal activity".*

G. Housing

G.2 Young people's access to housing

The most striking difference between the youth consultation and general consultation was the priority given by younger people to the issue of housing, which ranked surprisingly low on the public consultation.

- *"Haringey's housing waiting list is particularly long, especially with regards to young people wanting to move out. Many see that as their only option, as they cannot afford private housing."*
- Proposal 5c "Increase housing choice, and improve local people's access to housing, particularly by expanding affordable housing" had an average score of 4.20/5.00 (4th of 28)